

# \$589,900 - 324 Edmund Gale Drive, Winnipeg

MLS® #202517827

**\$589,900**

4 Bedroom, 4.00 Bathroom, 1,890 sqft

Residential

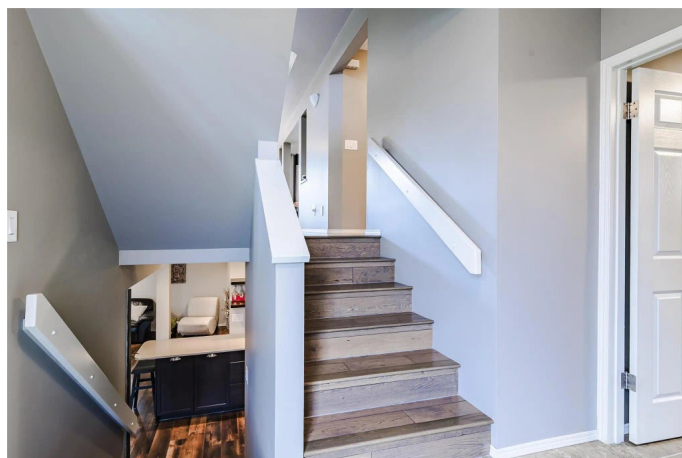
Canterbury Park, Winnipeg,

Showings Start Now With Offers Thursday August 7th 8PM - Welcome to Lovely 324 Edmund Gale Drive in Canterbury Park, Featuring 1890 sq ft of absolute luxury finishes plus an additional 700 sq ft of developed lower level. The inviting front entrance with has it's own closet, leading up a few stairs to your right takes you to garage entrance/mudroom/laundry, den and 2 pcs bathroom, to the left takes you to the open ceiling great room with the feature wall in cultured stone and fireplace, formal dining off the great room, large kitchen with an island, breakfast nook with a man door to the backyard, family room as well. The upper level features a large private primary bedroom with walk in closet, and 3 PCS ensuite and features a bench seating the front window. The upper level has an additional 4 PCS main bath and 2 generously sized secondary bedrooms. The fully developed basement features include a large bedroom, 4 PCS bathroom, closet and utility room for extra storage space, glass wall/door leads to the private office space, large rec room with a wet bar and fireplace/ent. Garage is spray foam insulated, drywalled, painted, finished yard with decks, fenced, patio, ready for your future hot tub.

Built in 2011

## Essential Information

MLS® #                      202517827



Price	\$589,900
Bedrooms	4
Bathrooms	4.00
Full Baths	3
Half Baths	1
Square Footage	1,890
Year Built	2011
Type	Residential
Sub-Type	Single Family Detached
Style	Two Storey
Status	Active

### Community Information

Address	324 Edmund Gale Drive
Area	3M - 3M
Subdivision	Canterbury Park
City	Winnipeg
Postal Code	R2C 4S4

### Amenities

Features	Air Conditioning-Central, Exterior walls, 2x6", Heat recovery ventilator, High-Efficiency Furnace, Laundry - Main Floor, No Pet Home, No Smoking Home, Smoke Detectors, Sump Pump
Parking Spaces	4
Parking	Double Attached, Front Drive Access, Garage door opener, Insulated, Paved Driveway
Garages	20ft x 20ft

### Interior

Interior	Wall-to-wall carpet, See remarks, Tile, Vinyl, Wood
Appliances	Blinds, Dishwasher, Dryer, Garage door opener, Garage door opener remote(s), Microwave, Refrigerator, Stove, Washer, Window Coverings
Heating	Forced Air
Fireplace	Yes
Fireplaces	Stove

### Exterior

Exterior	Brick & Siding, Stone, Stucco
Lot Description	Fenced, Fruit Trees/Shrubs, Landscaped deck, Landscaped patio, Paved Street, Public Transportation

Roof	Shingle
Construction	Wood Frame
Foundation	Concrete, Piled

**Additional Information**

Date Listed	July 14th, 2025
Days on Market	21

**Listing Details**

Listing Office	MaxWell Edge Realty
----------------	---------------------

© The Winnipeg Regional Real Estate Board.  
Listing information last updated on August 4th, 2025 at 2:45am MDT